




Rowlands METALWORKS



CAPABILITIES STATEMENT



**Rowlands Metalworks
was established in 1956
and has grown to be 1 of
SA's finest manufacturers
of sheetmetal product.**

**In 2009 Rowlands Metalworks
moved into a new purpose built
factory of some 2500 sqm.**

**Investment into the latest
CAD/CAM equipment was
integrated into this new facility
and to this day we are now
recognised as a leader within
our industry.**



ORGANISATIONAL INFORMATION

LOCATION

Unit 13, 19 Heath Street,
Lonsdale, SA, 5160

GENERAL BUSINESS DESCRIPTION

Manufacture and fabrication of quality metal products,
from one-off custom built products to high volume OEM supply.

NUMBER OF EMPLOYEES

Administration

9 Office

Workshop

1 Factory Supervisor

1 Quality Control

15 Tradespersons

1 CNC Team Leader

1 CNC Operator

4 Labourers

3 Apprentices

Group Total of 40 Employees

KEY PLANT & EQUIPMENT

CNC Laser/Punch Trumpf Press

CNC Turret Press

4 x CNC Press Brake

Programmable Guillotine (4m)

8 x S/S and Aluminum Welding Booths

8 x Ferrous Welding Booths

ACCREDITATIONS/ AFFILIATIONS

Defence Teaming Centre

Business SA

GMUSG

Southern Business Connections

RESA

Australian Stainless Steel Development Association

FACTORY SIZE

Heath Street Factory

2100sq/m

Linsday Road Factory

858sq/m

CERTIFICATES & LICENSES

2 Solidworks trained

4 AutoCAD trained

13 Certified Tradespersons

17 Forklift trained

10 White Card

5 First Aid Officers

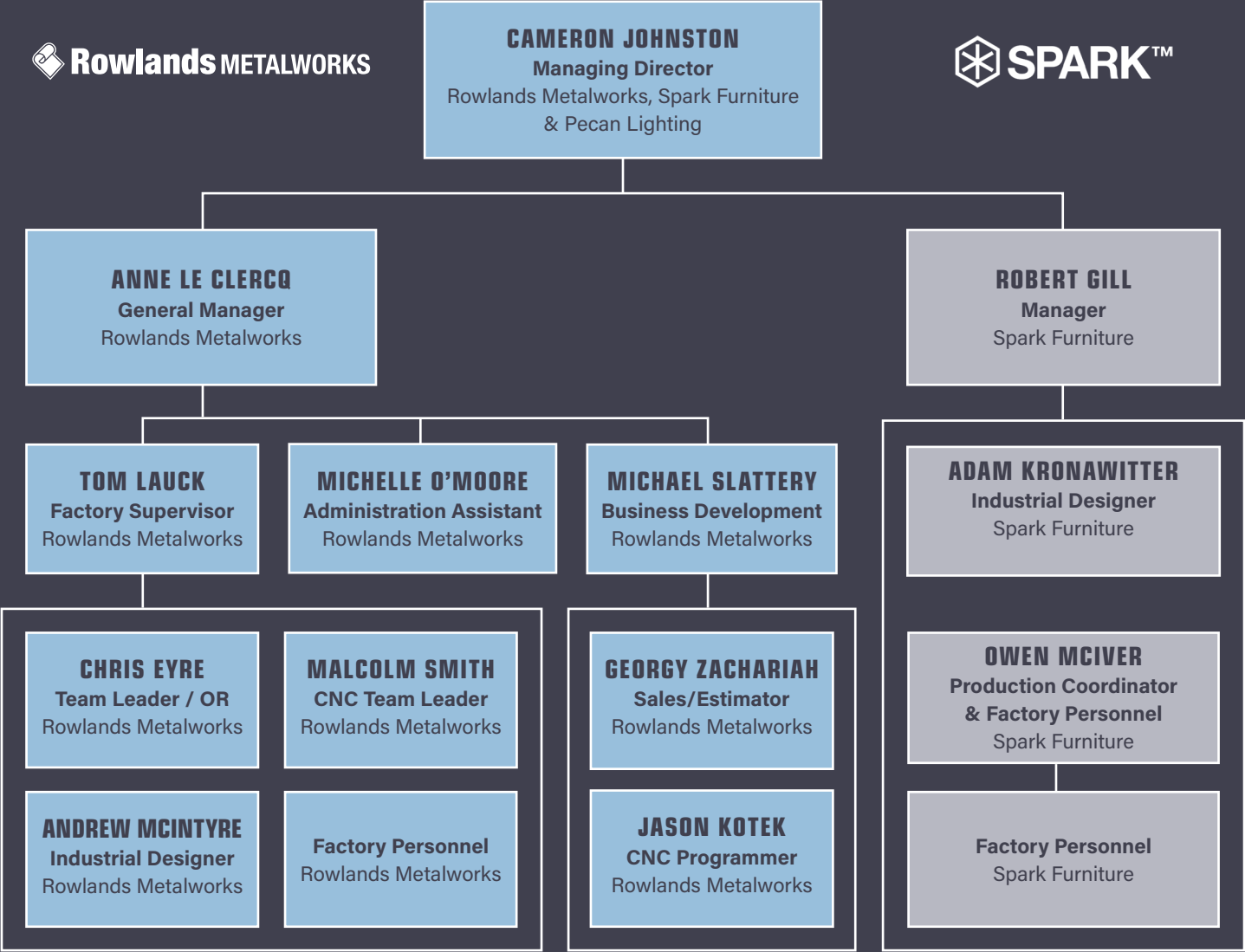
1 HSR Representative

1 Apprentice

8 Shopmate trained

Rowlands is an integral part of the The Johnston Group of Companies which incorporates Spark Furniture, Pecan Lighting and Rowlands Commercial.

JOHNSTON GROUP ORGANISATION CHART



OBJECTIVES

At Rowlands Metalworks, we understand the importance of on time delivery. Our purpose built facility allows our customers to track their order at any stage of manufacture from delivery scheduling and production planning to labour needs.

We are continually investing in state-of-the-art machinery which enables us to produce high quality products and custom projects for a diverse range of clients.

We work under an externally audited quality system, this has helped us build a reputation as an industry leader in custom sheet metal design and metal fabrication.









KEY CUSTOMERS

APC Technology

Auspress

Caroma Industries Limited

Axiom Precision Manufacturing

Sage Automation

Redarc

Seeley International

Device Technologies

MAJOR PROJECTS

Rundle Mall Upgrade

Henley Square Upgrade

Universal Building Merchants – Saudi Arabia

Metro Rail Upgrade – Vic

Signage – Adelaide Hills

Tramline Extension – North Tce

Parklets – Adelaide Council

AWD – HVAC Ducting

New Royal Adelaide Hospital

MANAGEMENT SYSTEMS & PRACTICES

OUR COMMITMENT

From planning and design, through to delivery and installation, Rowlands offers a service which is second to none. We'll happily take on any project at any stage, ensuring your desired outcome is achieved.

OUR OBJECTIVE

To supply and deliver the highest quality craftsmanship every time, in a safe, reliable, cost efficient and timely manner, whether the project is large or small.

QUALITY MANAGEMENT SYSTEM



ISO9001:2015 / Certification

QEC: 28801

WORK HEALTH SAFETY

Our commitment to WHS aims to ensure, so far as reasonably practicable, that all employees are safe from injury and risk to health while at work. This will be achieved by striving to continually

improve our health and safety systems and practices, and by comparing those against industry standards.

Workcover Registered No. 21133107

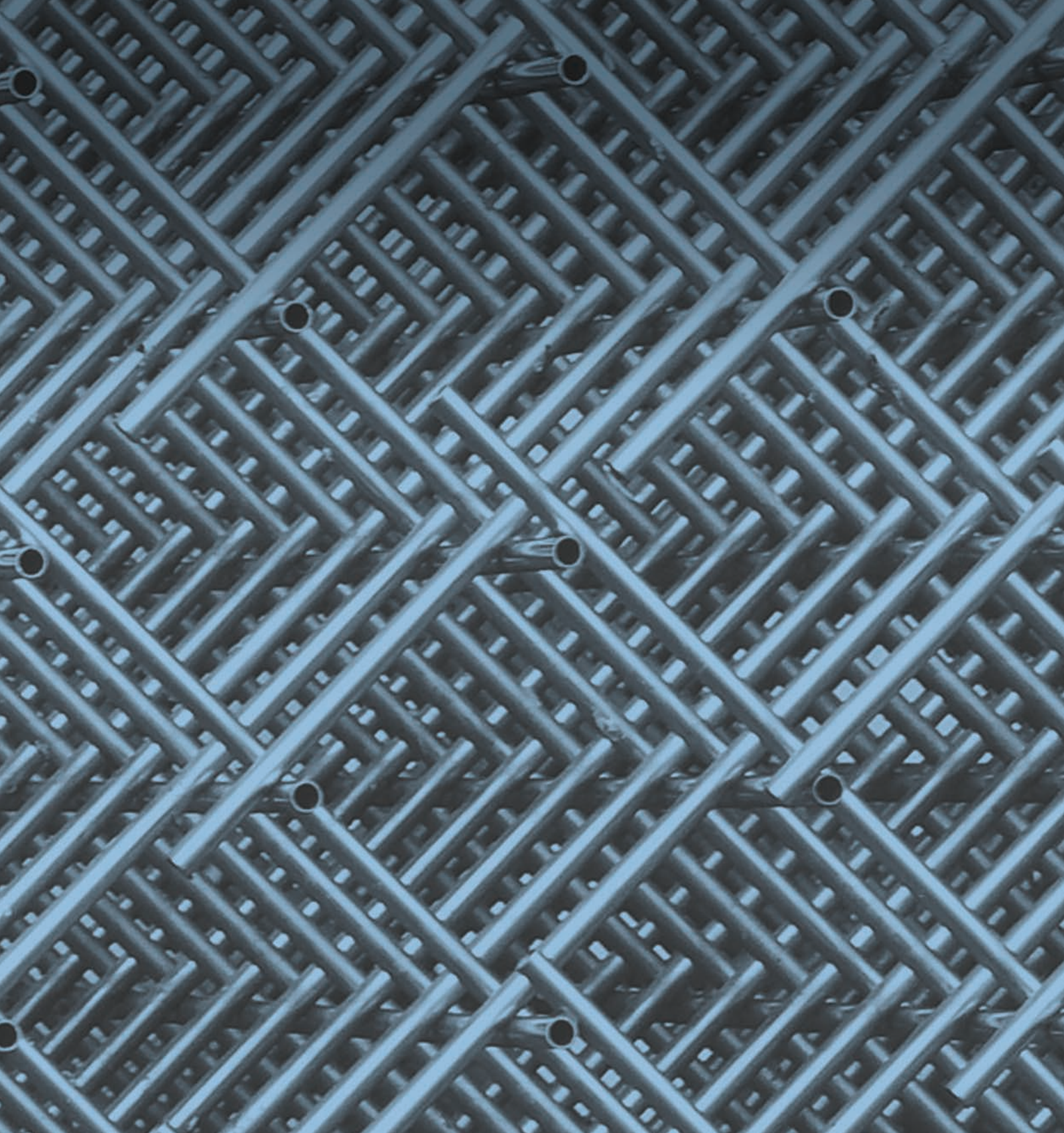
ENVIRONMENTAL MANAGEMENT

Rowlands Metalworks is committed to integrating environmental considerations into its business decisions.



KEY CONTACTS

CAMERON JOHNSTON	Managing Director 0418 895 977 cameron@rowlandsmetal.com.au
ANNE LE CLERCQ	General Manager 0419 832 612 anne@rowlandsmetal.com.au
MICHAEL SLATTERY	Business Development Manager 0418 883 828 michael@rowlandsmetal.com.au
ANDY KRONAWITTER	Factory Supervisor 04338 362 363 andy@rowlandsmetal.com.au
GEORGY ZACHARIAH	Account Manager estimating@rowlandsmetal.com.au
CHRIS EYRE	Team Leader / QA chris@rowlandsmetal.com.au
ANDREW MCINTYRE	Industrial Designer andrew@rowlandsmetal.com.au
JASON KOTEK	Programmer jason@rowlandsmetal.com.au
MALCOLM SMITH	CNC Team Leader malcolm@rowlandsmetal.com.au



Phone +61 8 8389 6700

Email metal@rowlandsmetal.com.au

ROWLANDSMETAL.COM.AU